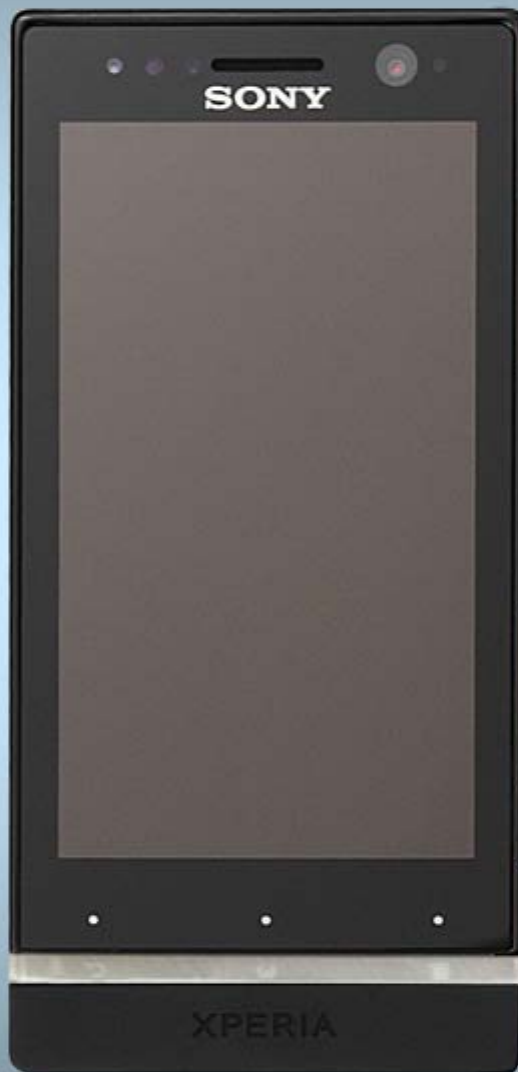


Working Instructions

- mechanical -



ST25i, ST25a

CONTENTS

1	Exterior Views.....	4
1.1	ST25i, ST25a.....	4
2	Tools	5
3	Disassembly.....	6
3.1	Battery Cover Assy & Battery	6
3.2	Antenna Cap.....	7
3.3	Carrier Frame Assy	8
3.4	Carrier Window Front assy.....	10
3.5	Main PBA & Transparent Belt Total Assy.....	12
4	Replacement	14
4.1	Battery Cover Assy	14
4.2	Antenna Cap.....	14
4.3	Carrier Frame Assy	14
4.4	Transparent Belt Total Assy.....	14
4.5	Antenna Main.....	15
4.6	Audio Jack & Audio jack adhesive	17
4.7	Audio Jack Sensor FPC Assy	19
4.8	Core Unit Label.....	20
4.9	Touch Panel Glass Window 3.5 with Gasket.....	22
4.10	Display	26
4.11	Carrier Window Front assy.....	29
4.12	Ear Speaker & Receiver adhesive	30
4.13	Loudspeaker & Speaker adhesive	32
4.14	kMain Camera.....	34
4.15	Main Camera Copper & Main Camera Film.....	36
4.16	Shield Can Lid ABB.....	38
4.17	Shield Can Lid BT GPS	39
4.18	Shield Can Lid DBB.....	40
4.19	Sub Camera Rubber.....	41
4.20	Water indicator	42
4.21	Board Swap - Replacement	44
4.22	Board Swap – Change Label	44
4.23	Board Swap – Customize of Software	44
5	Reassembly.....	45
5.1	Main PBA & Transparent Belt Total Assy.....	45
5.2	Carrier Window Front assy.....	46
5.3	Carrier Frame Assy	47
5.4	Antenna Cap.....	49
5.5	Battery Cover Assy & Battery	50



make.believe

Working Instruction Repair Instruction Mechanical

6 Country of Origin Barcodes for Brazil/VIVO Labels..... 52

7 Revision History 53

For general information about mechanical repair related issues, refer to 1220-1333: Generic Repair Manual - mechanical

1 Exterior Views

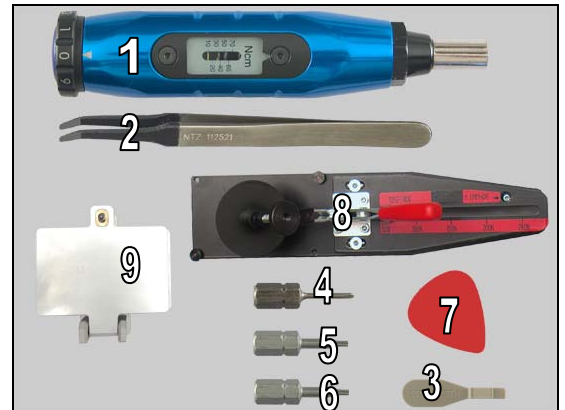
1.1 ST25i, ST25a



2 Tools

SPECIAL TOOLS

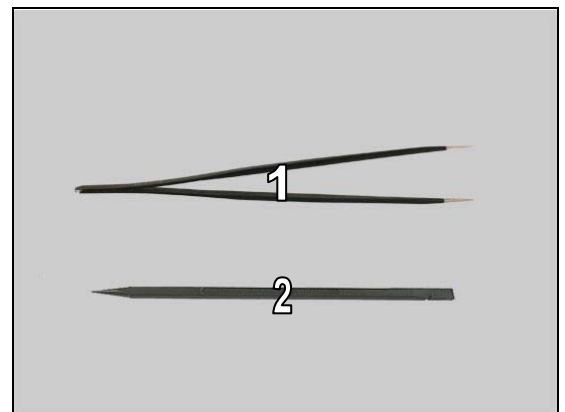
1. Torque Screwdriver
2. Flex Film Assembly Tool
3. Front Opening Tool
4. Bits(JCIS No 0)
5. Bits(T5)
6. Bits(T6)
7. Guitar Pick
8. Pressure Tool
9. Pressure Fixture



For part no's on the tools above, refer to the 'Tools Catalogue/Matrix'!

STANDARD TOOLS

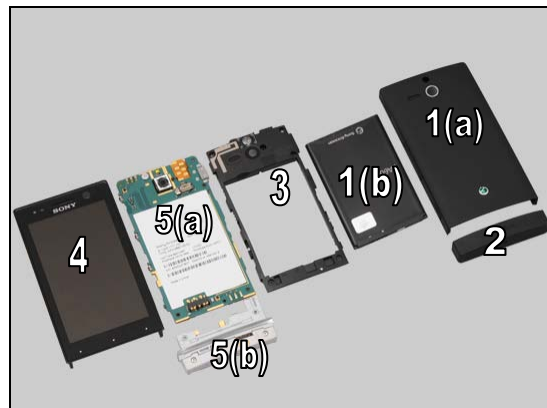
1. Tweezers (ESD-safe & non-metallic)
2. Nylon Pointer



3 Disassembly

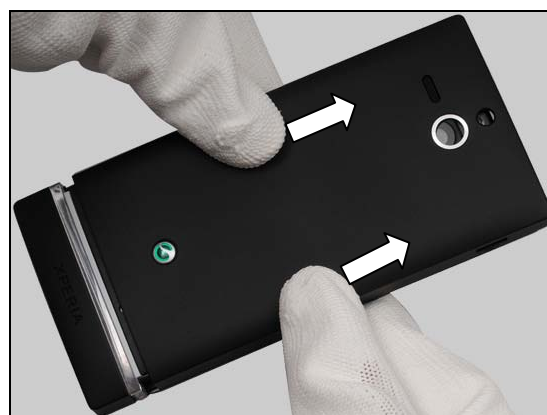
The disassembly is done in the following order:

1. Battery Cover Assy (a) & Battery (b)
2. Antenna Cap
3. Carrier Frame Assy
4. Carrier Window Front assy
5. Main PBA (a) & Transparent Belt Total Assy (b)



3.1 Battery Cover Assy & Battery

Push upwards the Battery Cover Assy with fingers.



Remove the Battery Cover Assy.



Lift up the battery from its cavity.



Disassembly

Remove the battery.



3.2 Antenna Cap

Release the hook of Antenna Cap from the gap between Antenna Cap and Transparent Belt Total Assy from left side with fingers.



Release the hook from right side.



Remove the Antenna Cap.



Disassembly

3.3 Carrier Frame Assy

Remove the Screw Other Len:4.0 Diam:1.4 by a screwdriver with Bits (T5).

Scrap! Not to be reused!



Remove the Screw Torx Len:5.4 Diam:2.5 by using a screwdriver with Bits (T6).

Scrap! Not to be reused!



Remove the Screw Torx Len:3.4 Diam:3.0 by using a screwdriver with Bits (T5).

Scrap! Not to be reused!



Insert the Front Opening Tool to release the hook in the middle of right side on Carrier Frame Assy.



Disassembly

Insert the Front Opening Tool to release the hook at top of right side on Carrier Frame Assy.



Insert the Front Opening Tool to release the hook in the middle of left side on Carrier Frame Assy.



Insert the Front Opening Tool to release the hook at top of left side on Carrier Frame Assy.



Remove the Carrier Frame Assy.

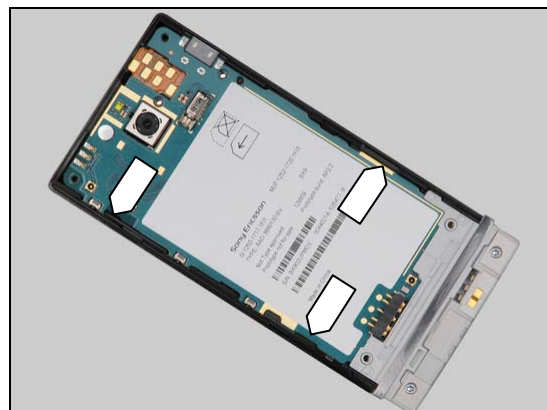


Disassembly

3.4 Carrier Window Front assy

There are three hooks to secure the Main PBA as shown in the picture.

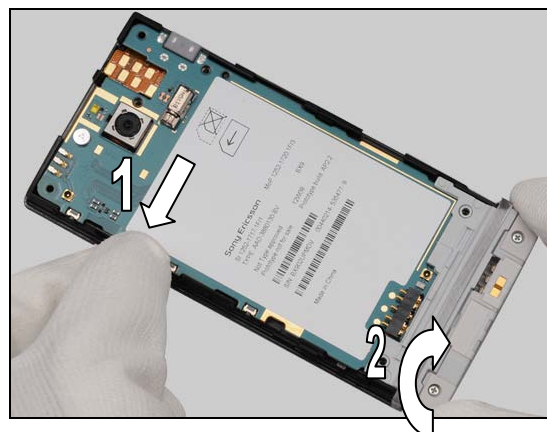
Push the Carrier Window Front assy with your thumb to release the hook in the middle of right side and turn upwards the Transparent Belt Total Assy.



Push the Carrier Window Front assy with your thumb to release the hook at bottom of left side and turn upwards the Transparent Belt Total Assy.



Push the Carrier Window Front assy with your thumb to release the hook at top of left side and turn upwards the Transparent Belt Total Assy.



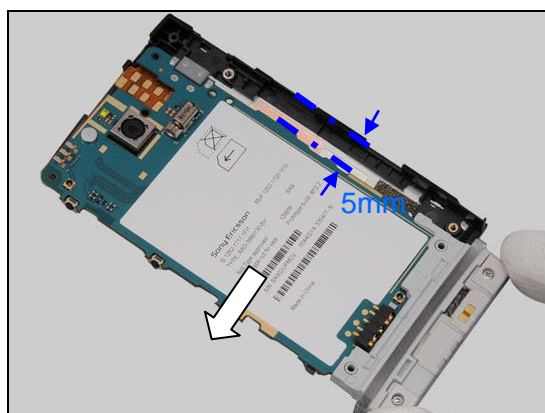
Disassembly

The three hooks have all been released as shown in the picture.



Move the Main PBA 5mm away from the Carrier Window Front Assy.

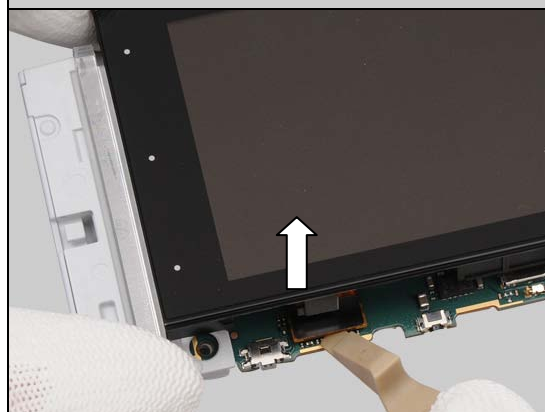
Do not stretch the FPC of BtB connector!



Turn over the phone to show the BtB connector.

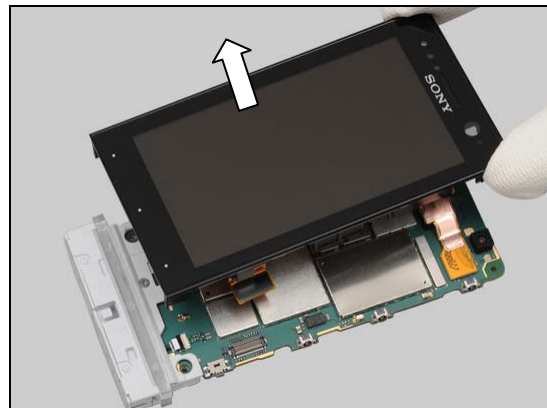


Unsnap the BtB connector by using a Front Opening Tool.



Disassembly

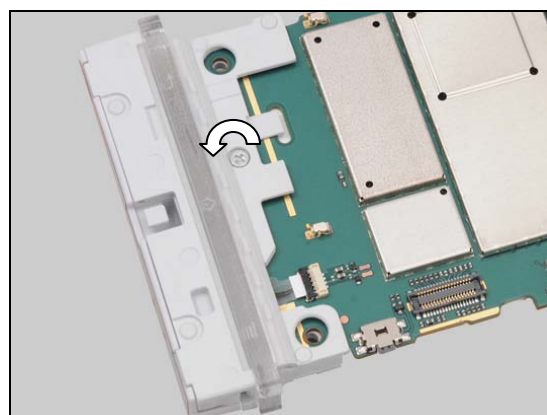
Remove the Carrier Window Front assy.



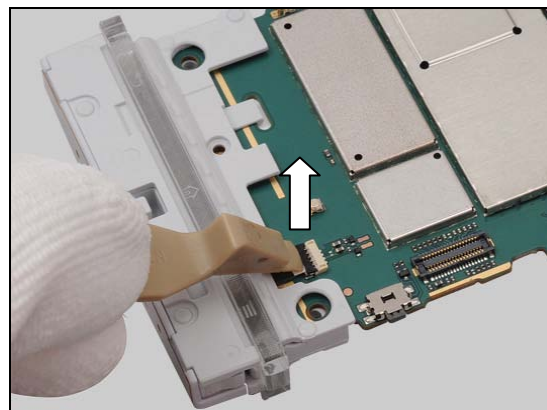
3.5 Main PBA & Transparent Belt Total Assy

Remove the Screw Torx Len:3.1 Diam:1.4 by using a screwdriver with Bits (JCIS No 0).

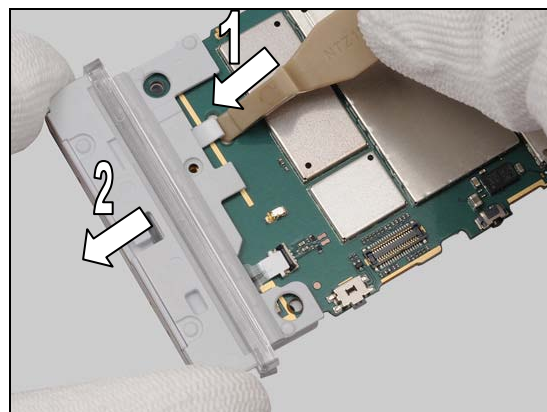
Scrap! Not to be reused!



Unlock the ZIF connector by using a Front Opening Tool.

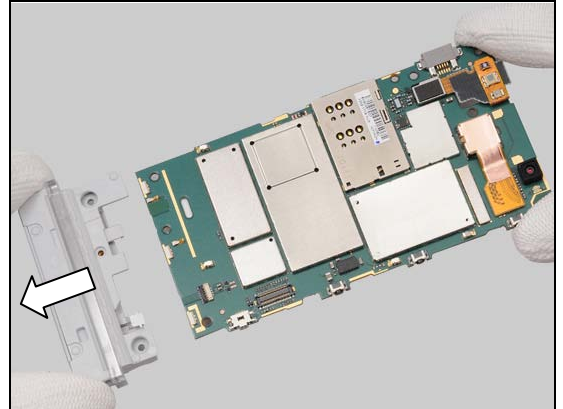


Insert Front Opening Tool to release the hook and pull out the Transparent Belt Total Assy.



Disassembly

Separate the Main PBA from Transparent Belt Total Assy carefully.



4 Replacement

4.1 Battery Cover Assy

Follow the 3.1 Disassembly instructions!

Prepare the new Battery Cover Assy.

Follow the 5.5 Reassembly instructions!



4.2 Antenna Cap

Follow the 3.1 – 3.2 Disassembly instructions!

Prepare the new Antenna Cap.

Follow the 5.4 – 5.5 Reassembly instructions!



4.3 Carrier Frame Assy

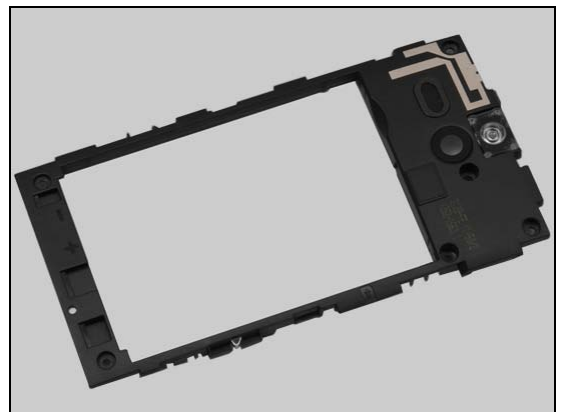
Follow the 3.1 – 3.3 Disassembly instructions!

Follow the 4.6, 4.13, 4.20 Removal instructions!

Prepare the new Carrier Frame Assy.

Follow the 4.6, 4.13, 4.20 Installation instructions!

Follow the 5.3 – 5.5 Reassembly instructions!



4.4 Transparent Belt Total Assy

Follow the 3.1 – 3.5 Disassembly instructions!

Follow the 4.5 Removal instructions!

Prepare the new Transparent Belt Total Assy.

Follow the 4.5 Installation instructions!

Follow the 5.1 – 5.5 Reassembly instructions!



Replacement

4.5 Antenna Main

Follow the 3.1 – 3.2 Disassembly instructions!

Carry out the Removal as described below.

Prepare the new Antenna Main.

Carry out the Installation as described below.

Follow the 5.4 – 5.5 Reassembly instructions!

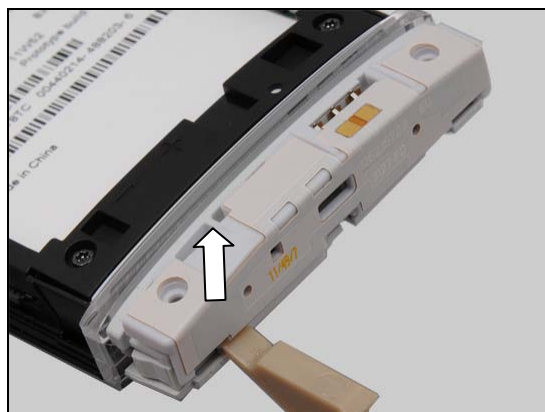
REMOVAL

Remove the Screw Other Len:4.0 Diam:1.4 by using a screwdriver with T5.

Scrap! Not to be reused!

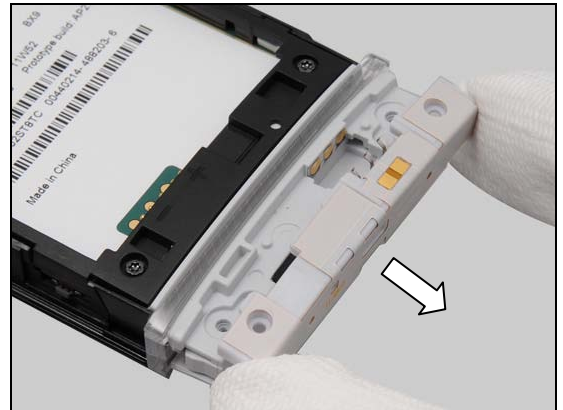
Detach the Antenna Main from right bottom side by using a Front Opening Tool.

Detach the Antenna Main from left bottom side by using a Front Opening Tool.



Replacement: Antenna Main

Remove the Antenna Main.

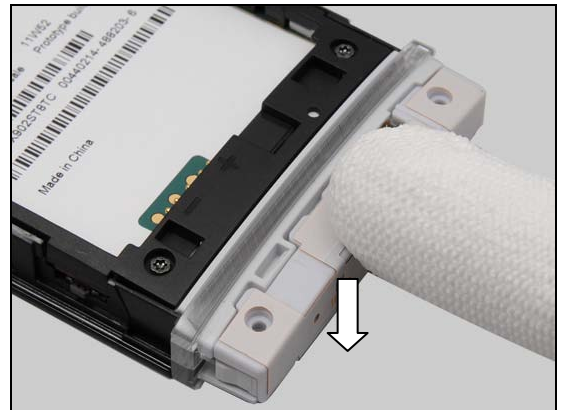


INSTALLATION

Place a new Antenna Main in the correct position.



Press to secure its position.



Apply 6 ± 1 Ncm torque when tightening the Screw Other
Len:4.0 Diam:1.4 with T5.

Take new screws!



Replacement

4.6 Audio Jack & Audio jack adhesive

Follow the 3.1 – 3.3 Disassembly instructions!

Carry out the Removal as described below.

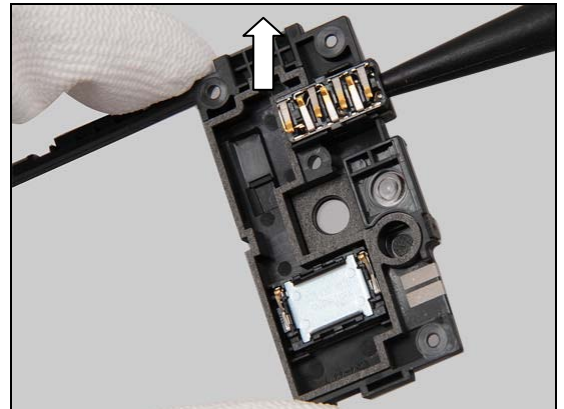
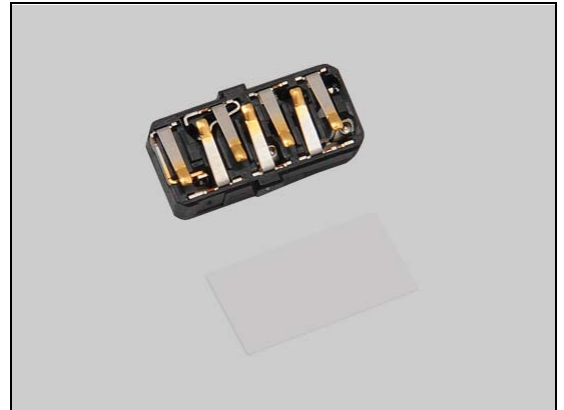
Prepare the new Audio Jack & Audio jack adhesive.

Carry out the Installation as described below.

Follow the 5.3 – 5.5 Reassembly instructions!

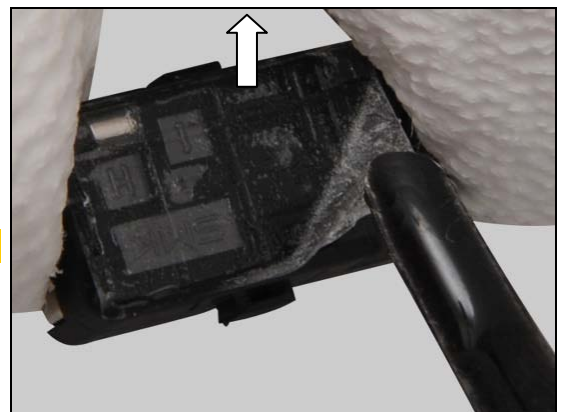
REMOVAL

Push against the Audio Jack by using a Nylon Pointer.



Remove the Audio jack adhesive from the back side of Audio Jack by using a Flex Film Assembly Tool.

Scrap! The Audio jack adhesive is not allowed to reuse!



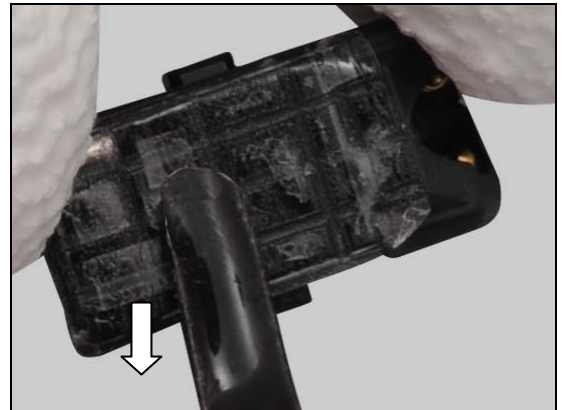
INSTALLATION

Place a new Audio Jack and new Audio jack adhesive in correct position.

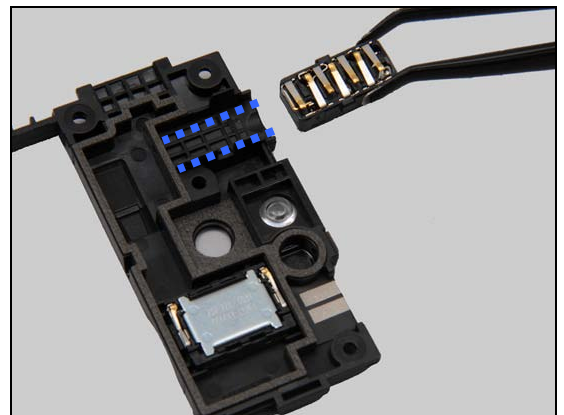


Replacement: Audio Jack & Audio jack adhesive

Align the Audio jack adhesive as shown and press to secure its attachment.

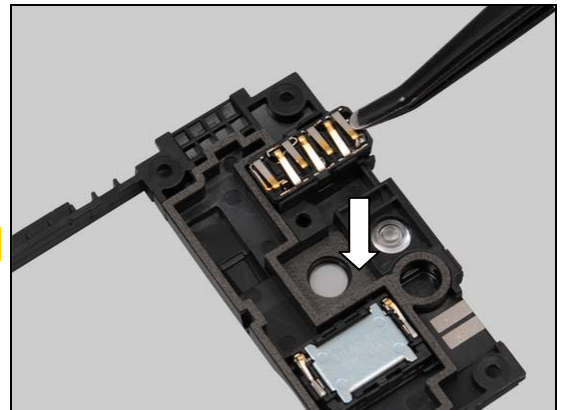


Place the new Audio Jack with Audio jack adhesive in correct position as shown.



Press to secure its position and attachment by using a Flex Film Assembly Tool.

Do not touch the pins on Audio Jack!



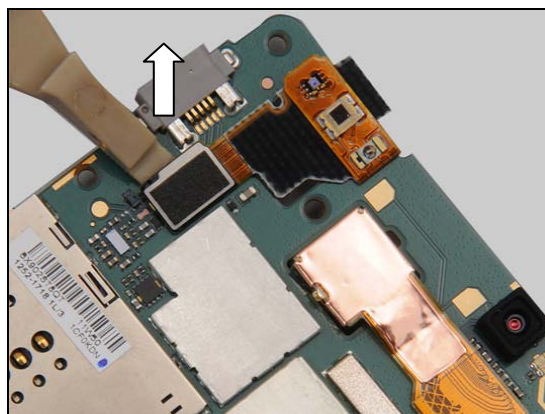
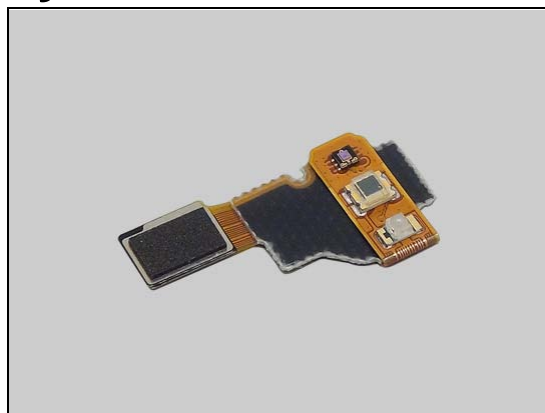
Replacement

4.7 Audio Jack Sensor FPC Assy

Follow the 3.1 – 3.4 Disassembly instructions!
 Carry out the Removal as described below.
 Prepare the new Audio Jack Sensor FPC Assy.
 Carry out the Installation as described below.
Follow the 5.2 – 5.5 Reassembly instructions!

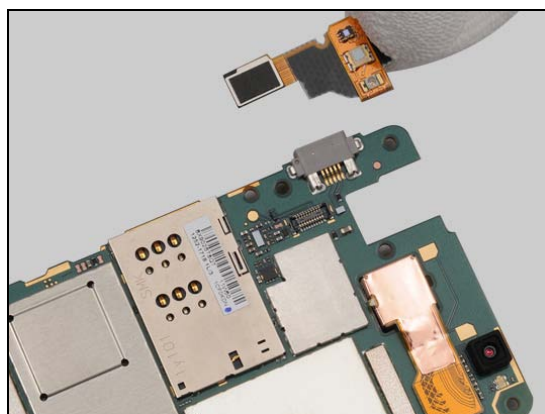
REMOVAL

Unsnap the BtB connector by using a Front Opening Tool and remove the Audio Jack Sensor FPC Assy.

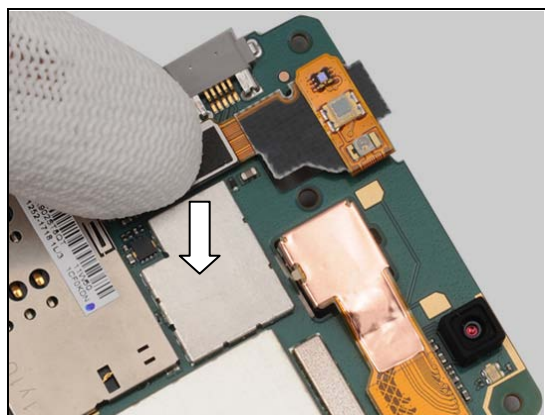


INSTALLATION

Prepare the Audio Jack Sensor FPC Assy.



Snap the BtB connector.



Replacement

4.8 Core Unit Label

Follow the 3.1 Disassembly instructions!

Carry out the Removal as described below.

Prepare the new Core Unit Label.

Carry out the Installation as described below.

Follow the 5.5 Reassembly instructions!

REMOVAL

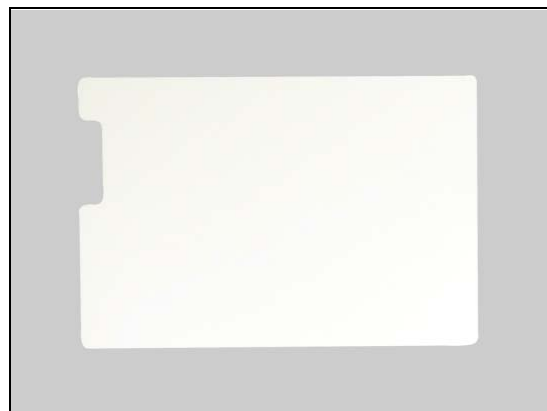
Copy old Core Unit Label information into the 'LabelMake' program.

Carefully remove the Label by using a pair of tweezers.

INSTALLATION

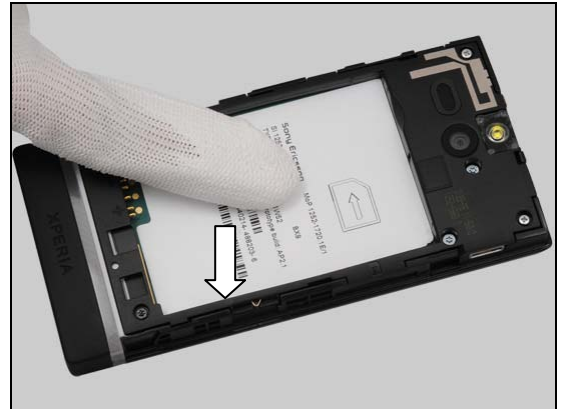
Check that the proper label format is loaded in the Zebra printer and print a new Label by using the 'LabelMake' software.

One label only is allowed!



Replacement: Core Unit Label

Press along the surface to secure the attachment.



Replacement

4.9 Touch Panel Glass Window 3.5 with Gasket

Follow the 3.1 – 3.4 Disassembly instructions!

Carry out the Removal as described below.

Follow 4.10 Removal instructions.

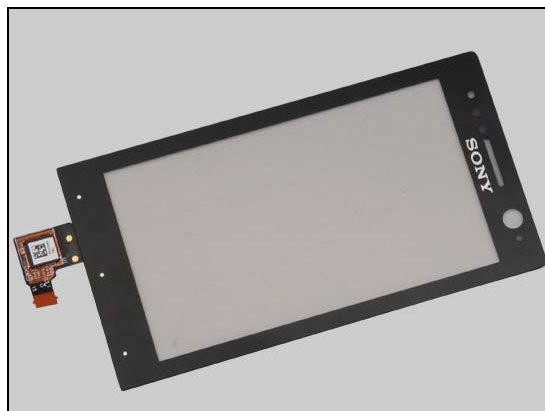
Prepare the new Touch Panel Glass Window 3.5 with Gasket.

Follow 4.10 Installations.

Carry out the Installation as described below.

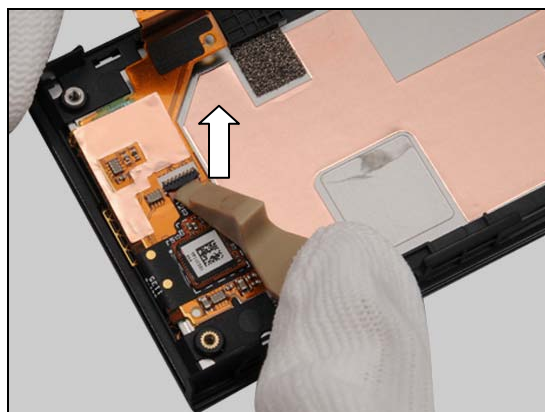
Follow the 5.2 – 5.5 Reassembly instructions!

Touch panel calibration has to be performed for all replaced units; 1257-2706 Trouble Shooting Application – mechanical.

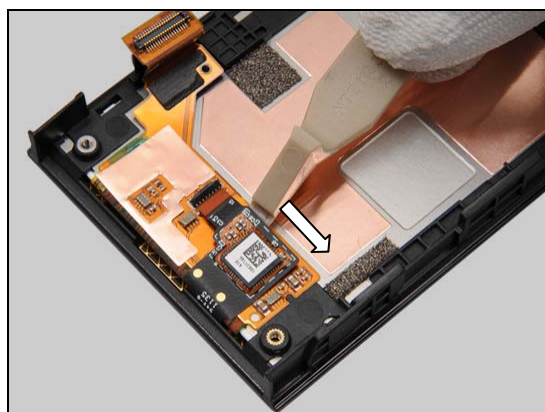


REMOVAL

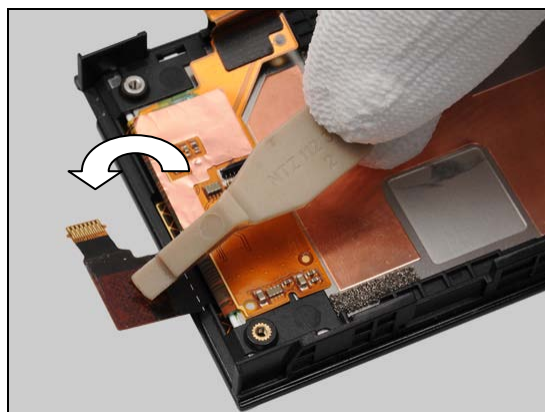
Unlock the ZIF connector by using a Front Opening Tool.



Detach the foil of FPC by using a Front Opening Tool.



Turn up the FPC of Touch Panel Glass Window 3.5 with Gasket.



Replacement: Touch Panel Glass Window 3.5 with Gasket

Detach the foil by using Front Opening Tool from the middle of bottom side.



Pull out the FPC through Carrier Window Front assy.



Remove the Touch Panel Glass Window 3.5 with Gasket.

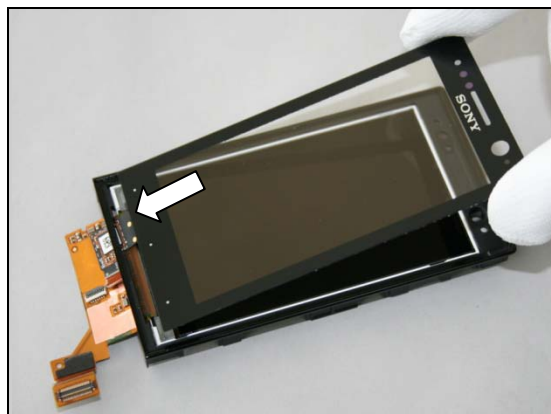
Scrap! The Touch Panel Glass Window 3.5 with Gasket and Carrier Window Front assy are not allowed to reuse!



INSTALLATION

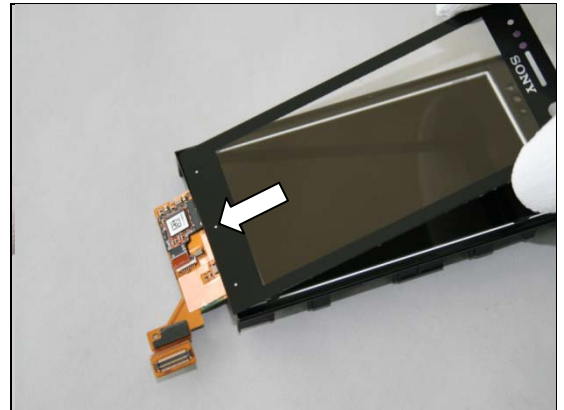
Insert the FPC of Touch Panel Glass Window 3.5 with Gasket through Carrier Window Front assy.

Make sure the Touch Panel Glass Window 3.5 with Gasket and Display are clean enough without dirty.

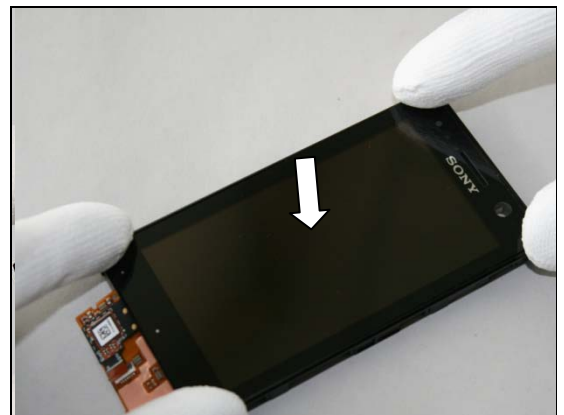


Replacement: Touch Panel Glass Window 3.5 with Gasket

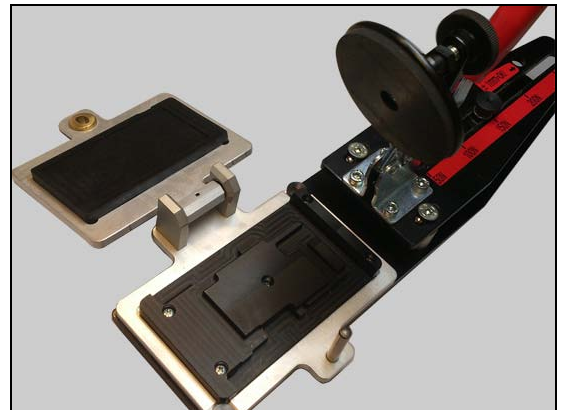
Insert the Touch Panel Glass Window 3.5 with Gasket into the cavity.



Press to secure its position and attachment.

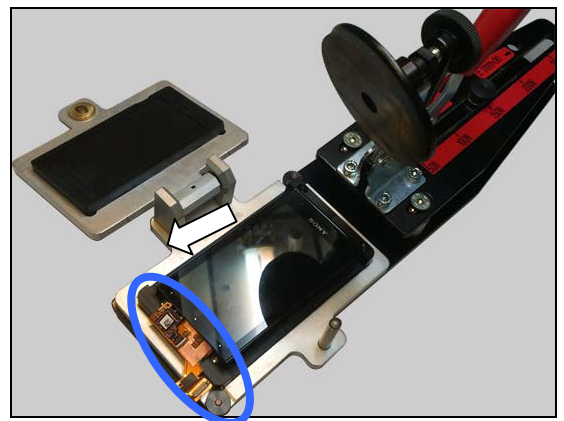


Install the Pressure Fixture insert onto the Pressure Tool and adjust the pressure to 150 N.



Place the Carrier Window Front assy onto the Pressure Fixture.

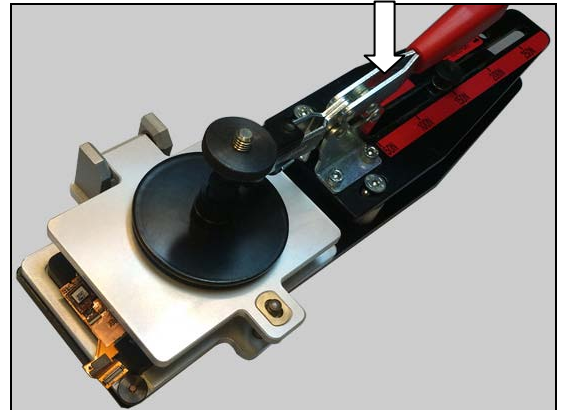
Make sure the Display FPC and the FPC of Touch Panel Glass Window 3.5 with Gasket outside in order not to be pressed damaged.



Replacement: Touch Panel Glass Window 3.5 with Gasket

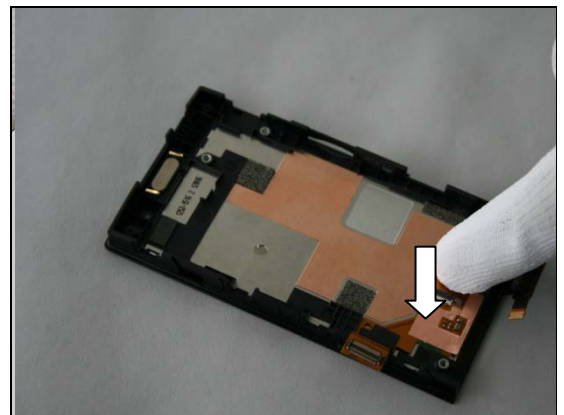
Close the Pressure Fixture insert.

Press down the Pressure Tool to press this Carrier Window Front assy for 10 seconds.



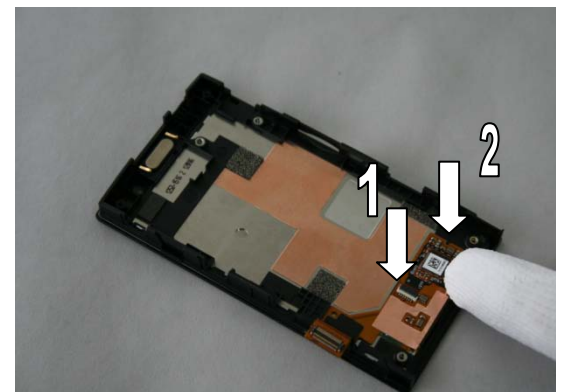
Turn over the Carrier Window Front assy.

Attach Display FPC onto Carrier Window Front assy in right position.



Lock the ZIF connector of Touch Panel Glass Window 3.5 with Gasket first.

Attach its FPC onto Carrier Window Front assy in right position then.



Replacement

4.10 Display

Follow the 3.1 – 3.4 Disassembly instructions!

Follow the 4.9 Removal instructions!

Carry out the Removal as described below.

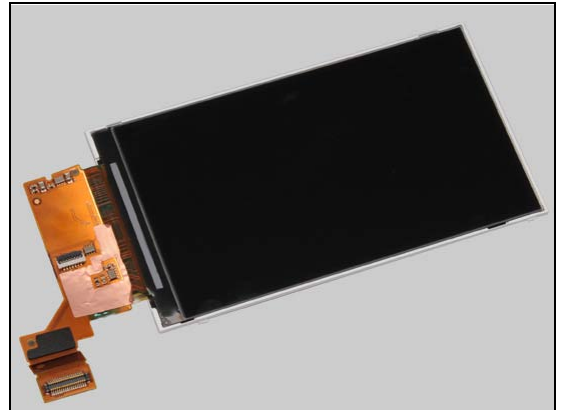
Prepare the new Display.

Carry out the Installation as described below.

Follow the 4.9 Installation instructions!

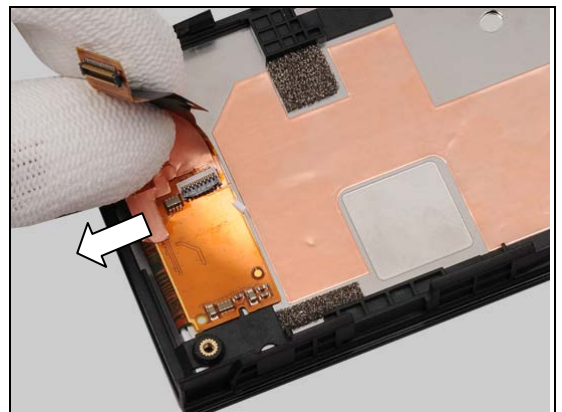
Follow the 5.2 – 5.5 Reassembly instructions!

Touch panel calibration has to be performed for all replaced units; 1257-2706 Trouble Shooting Application – mechanical.

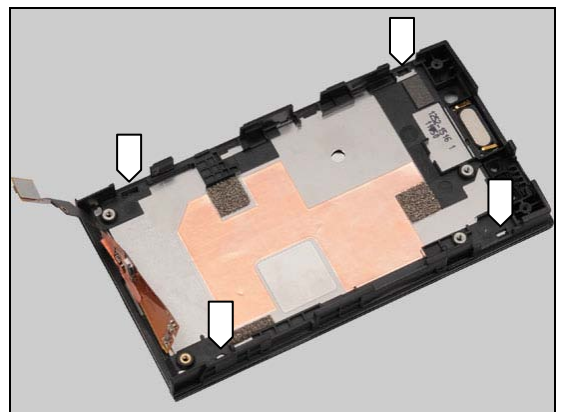


REMOVAL

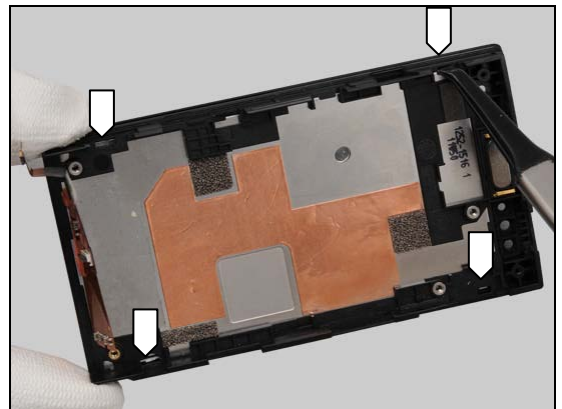
Detach the foil of FPC carefully.



There are four hooks to secure the Display as shown in the picture.



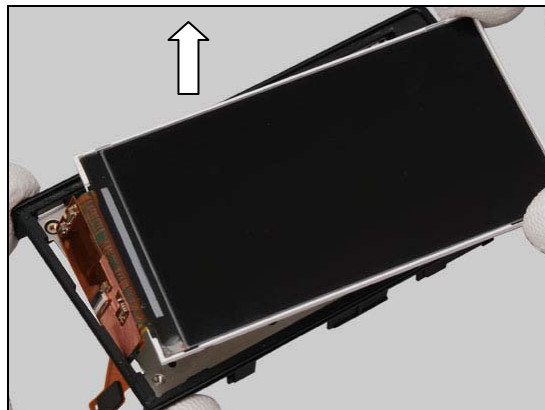
Release the four hooks one by one by using a Flex Film Assembly Tool.



Replacement: Display

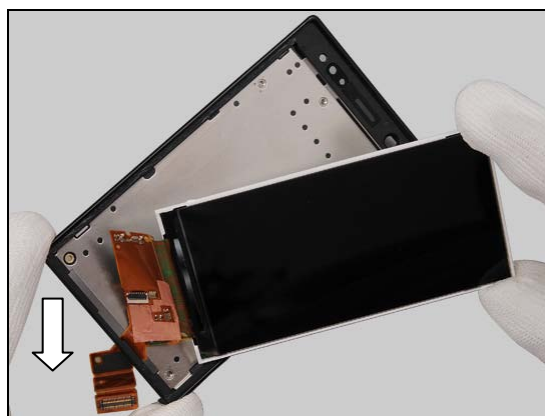
Move the FPC through the hole and lift to remove the Display.

Scrap! The Carrier Window Front assy is not allowed to reuse!



INSTALLATION

Prepare new Display and new Carrier Window Front assy. Insert the FPC through the hole as shown in the picture.

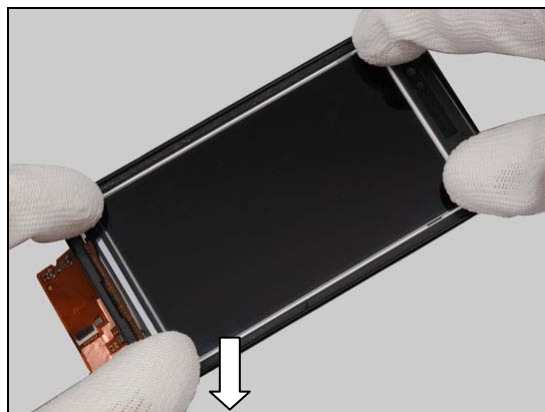


Place the Display into the cavity of Carrier Window Front assy.



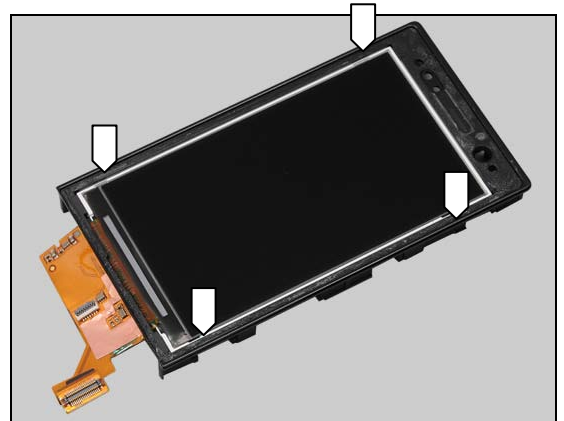
Press to secure its position.

Do not touch the Display.



Replacement: Display

Check the four hooks are secured.



Replacement

4.11 Carrier Window Front assy

Follow the 3.1 – 3.4 Disassembly instructions!

Follow the 4.9, 4.10, 4.12 Removal instructions!

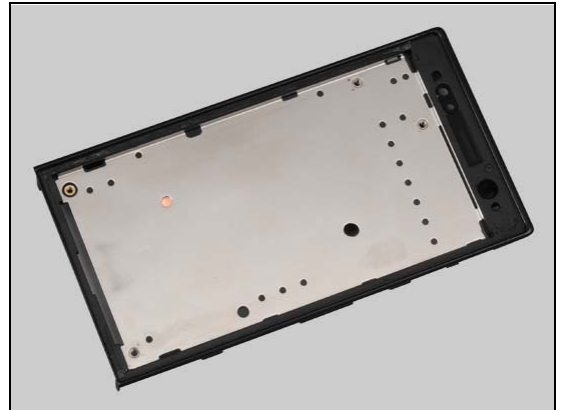
Prepare the new Carrier Window Front assy.

Follow the 4.9, 4.10, 4.12 Installation instructions!

Follow the 5.2 – 5.5 Reassembly instructions!

Scrap! The Touch Panel Glass Window 3.5 with Gasket and Carrier Window Front assy are not allowed to reuse!

Touch panel calibration has to be performed for all replaced units; 1257-2706 Trouble Shooting Application – mechanical.



Replacement

4.12 Ear Speaker & Receiver adhesive

Follow the 3.1 – 3.4 Disassembly instructions!

Carry out the Removal as described below.

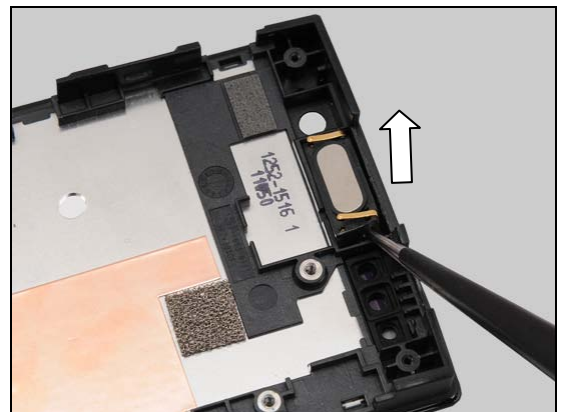
Prepare the new Ear Speaker & Receiver adhesive.

Carry out the Installation as described below.

Follow the 5.2 – 5.5 Reassembly instructions!

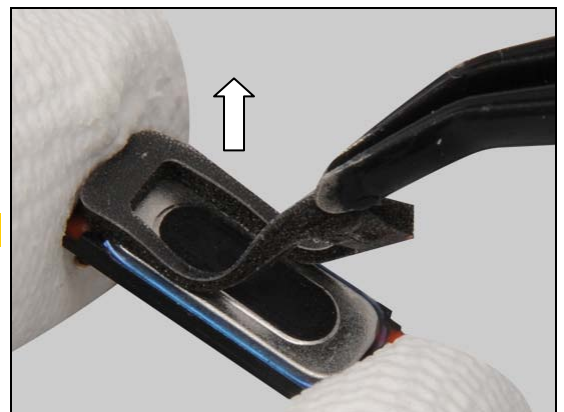
REMOVAL

Detach the Ear Speaker by using a pair of tweezers.



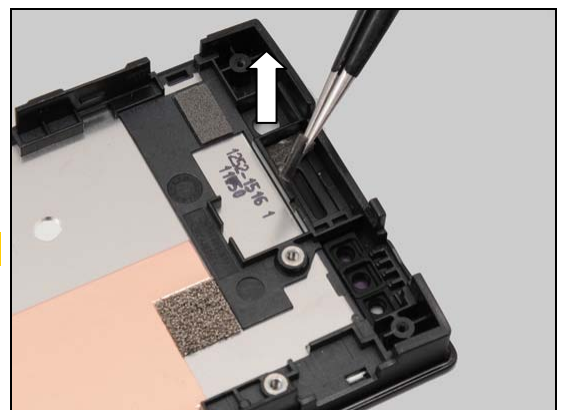
Remove the Receiver adhesive from Ear Speaker.

Scrap! The Receiver adhesive is not allowed to reuse!



Remove the Receiver adhesive from Carrier Window Front Assy.

Scrap! The Receiver adhesive is not allowed to reuse!



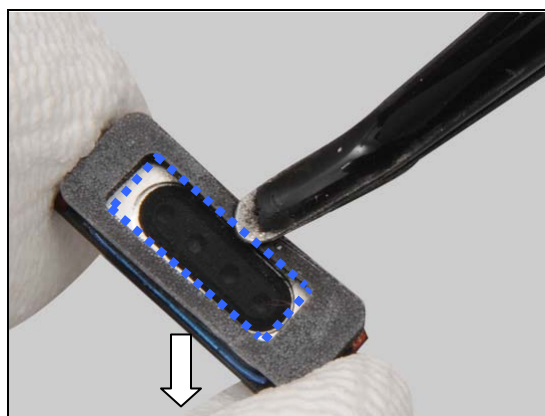
Replacement: Ear Speaker & Receiver adhesive

INSTALLATION

Place a new Receiver adhesive in correct position of the back side of Ear Speaker.

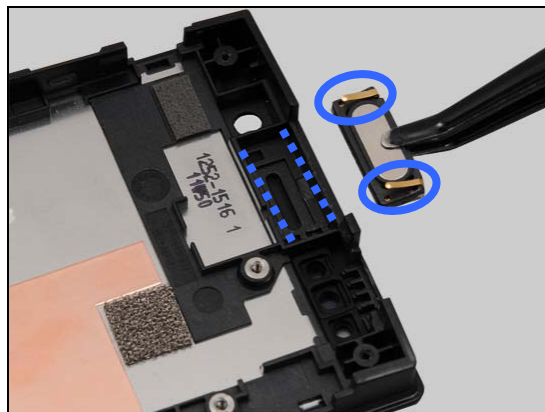


Align the Receiver adhesive with the inner metal edge by all four sides as shown.



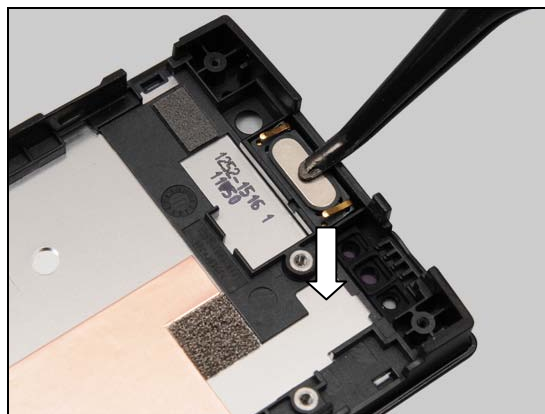
Place the new Ear Speaker with Receiver adhesive in correct position.

**The pin direction should be as shown in the picture!
Make sure there is no adhesive on Carrier Window Front
assy.**



Press to secure its position and attachment.

Do not touch the pins of Ear Speaker!



Replacement

4.13 Loudspeaker & Speaker adhesive

Follow the 3.1 – 3.3 Disassembly instructions!

Carry out the Removal as described below.

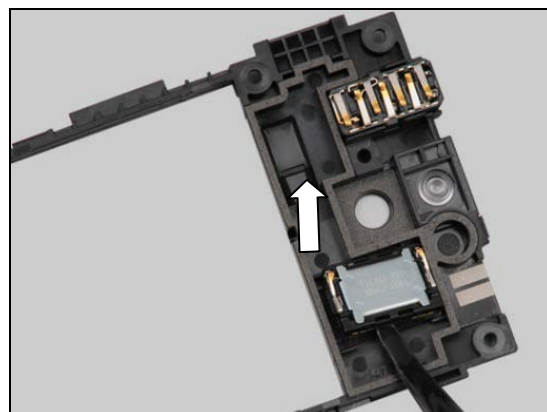
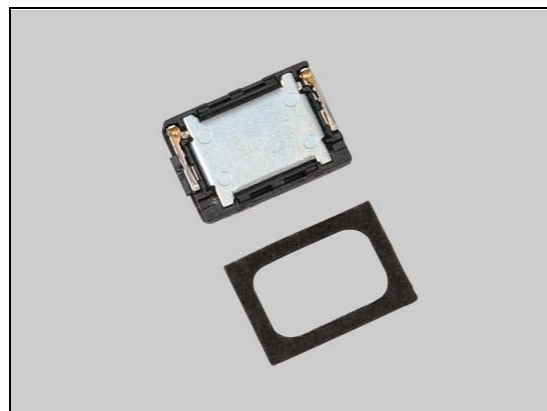
Prepare the new Loudspeaker & Speaker adhesive.

Carry out the Installation as described below.

Follow the 5.3 – 5.5 Reassembly instructions!

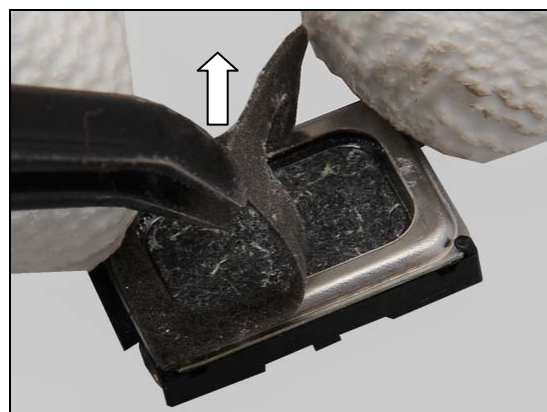
REMOVAL

Detach the Loudspeaker by using a Flex Film Assembly Tool.



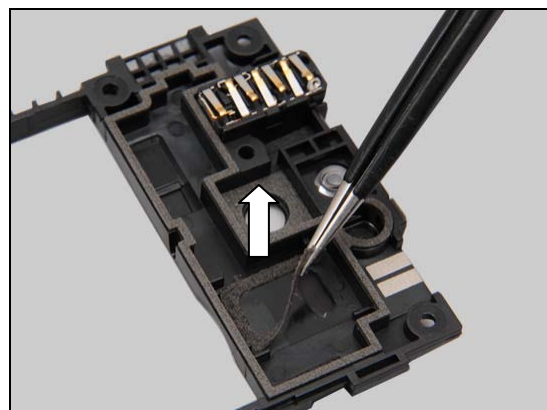
Remove the Speaker adhesive from Loudspeaker.

Scrap! The Speaker adhesive is not allowed to reuse!



Remove the Speaker adhesive from Carrier Frame Assy.

Scrap! The Speaker adhesive is not allowed to reuse!



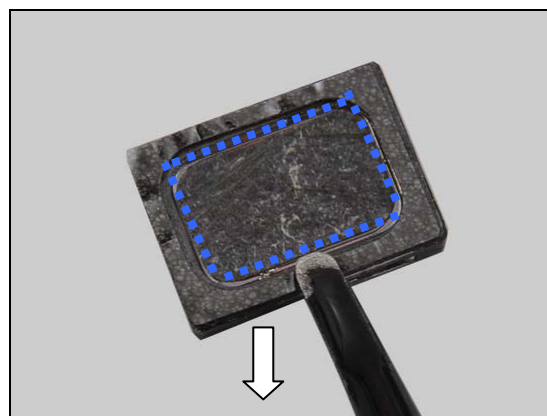
Replacement: Loudspeaker & Speaker adhesive

INSTALLATION

Place a new Speaker adhesive in proper position of the back side of Loudspeaker.

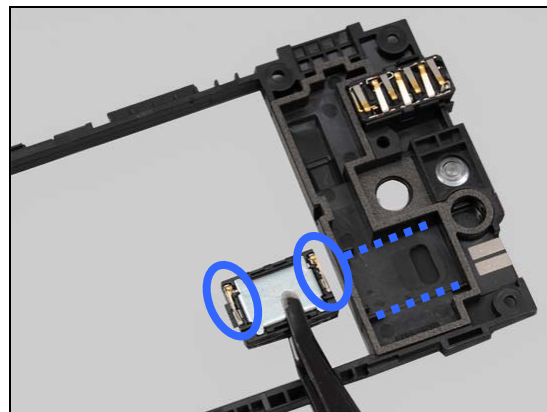


Align the Speaker adhesive with the inner metal edge by all four sides as shown and press to secure its attachment.



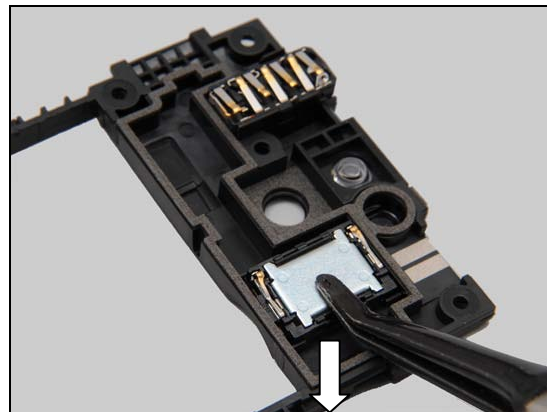
Place the new Loudspeaker with Speaker adhesive in correct position.

The pin direction should be as shown in the picture!
Make sure there is no adhesive on Carrier Frame Assy.



Press to secure its attachment.

Do not touch the pins of the Loudspeaker!



Replacement

4.14 kMain Camera

Follow the 3.1 – 3.4 Disassembly instructions!

Carry out the Removal as described below.

Prepare the new Main Camera.

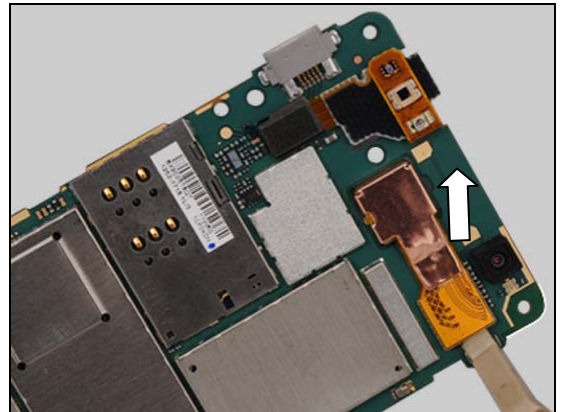
Follow the 4.15 Installation instructions!

Carry out the Installation as described below.

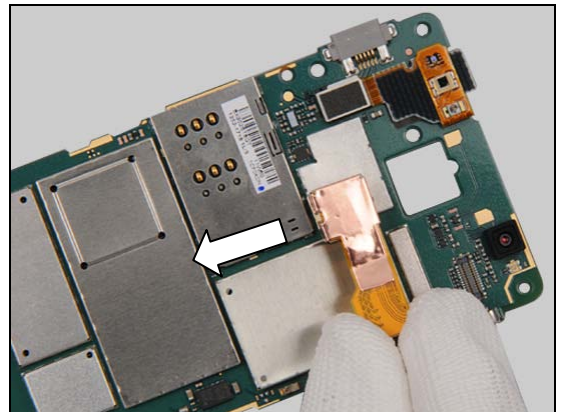
Follow the 5.2 – 5.5 Reassembly instructions!

REMOVAL

Unsnap the BtB connector.



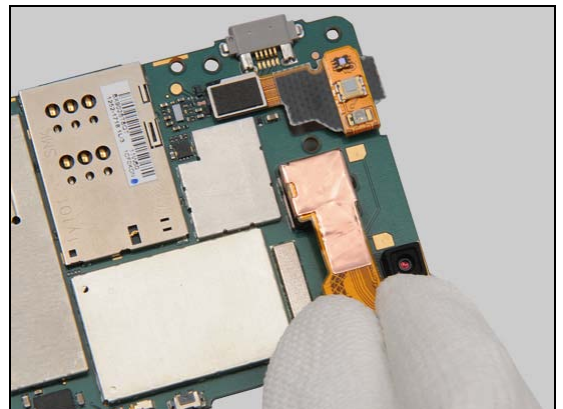
Remove the Main Camera.



INSTALLATION

Place a new Main Camera in the correct position.

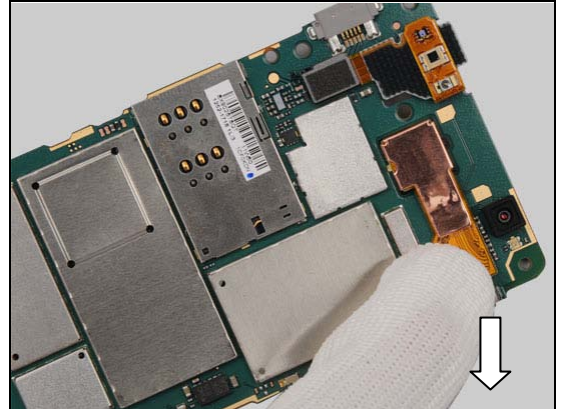
Make Sure that Main Camera Copper & Main Camera Film are assembled on Main Camera. Refer to 4.15



Replacement: Main Camera

Snap the BtB connector.

Make Sure that Main Camera Copper & Main Camera Film are assembled on Main Camera. Refer to 4.15



Replacement

4.15 Main Camera Copper & Main Camera Film

Follow the 3.1 – 3.4 Disassembly instructions!

Follow the 4.14 Removal instructions!

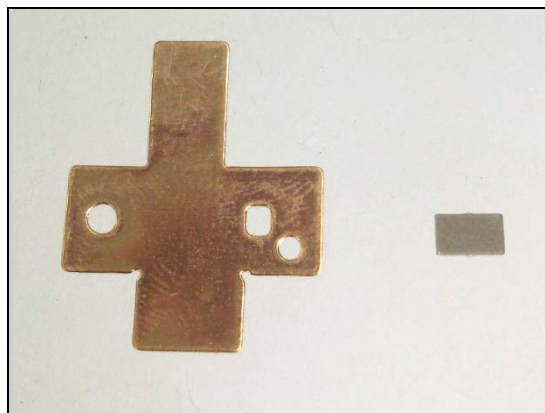
Carry out the Removal as described below.

Prepare the new Main Camera Copper & Main Camera Film.

Carry out the Installation as described below.

Follow the 4.14 Installation instructions!

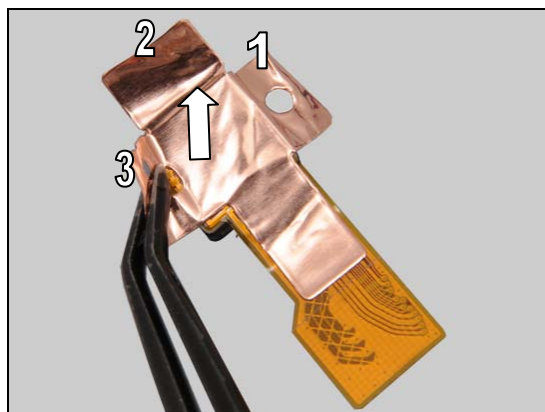
Follow the 5.2 – 5.5 Reassembly instructions!



REMOVAL

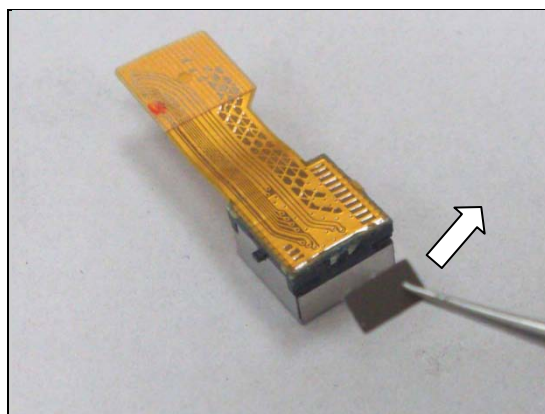
Peel off the Main Camera Copper from three sides as shown in the picture.

Scrap! Not to be reused!



Peel off the Main Camera Film.

Scrap! Not to be reused!

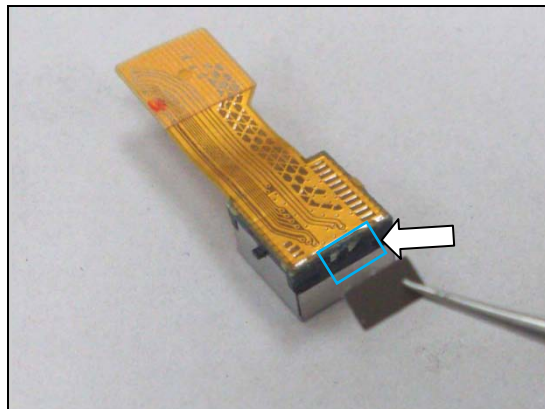


INSTALLATION

Place a new Main Camera Film in the upper middle position to cover two soldering pads.

Using Main Camera Film to cover two soldering Pads.

Both kinds of Main Camera type from two suppliers are all needed to add this Main Camera Film at this upper middle position.



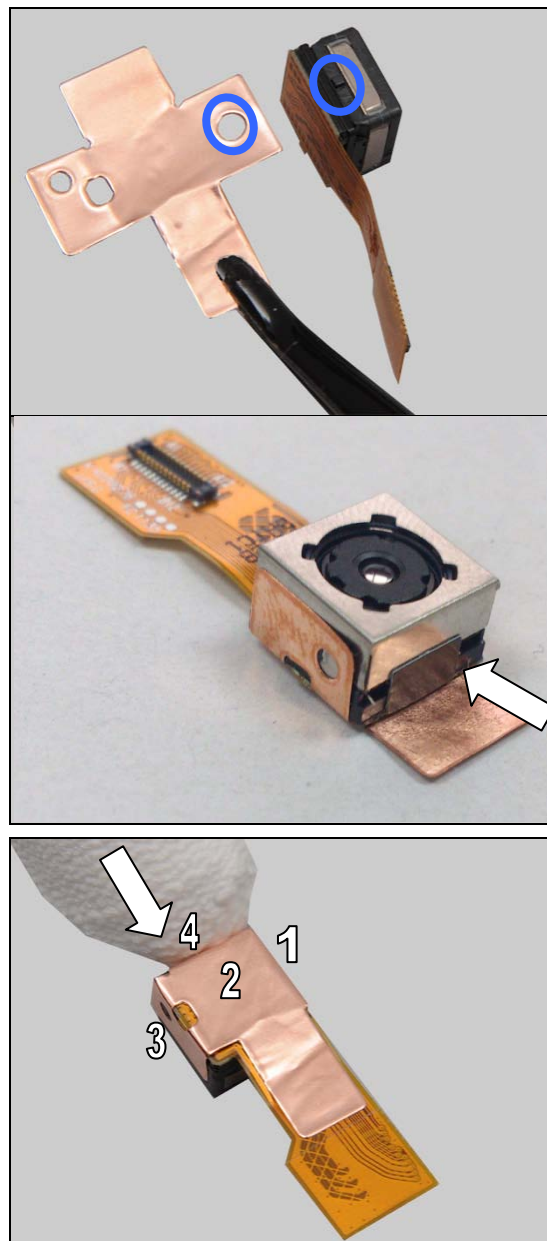
Replacement: Main Camera Copper

Place a new Main Camera Copper in the correct position.

Note the guiding hole. The guiding hole must be aligned between the Main Camera and the Main Camera Copper.

Make sure the Main Camera Film is assembled before pressing Main Camera Copper.

Press the Main Camera Copper four sides as shown in the picture to secure its position and attachment.



Replacement

4.16 Shield Can Lid ABB

Follow the 3.1 – 3.5 Disassembly instructions!

Carry out the Removal as described below.

Prepare the Shield Can Lid ABB.

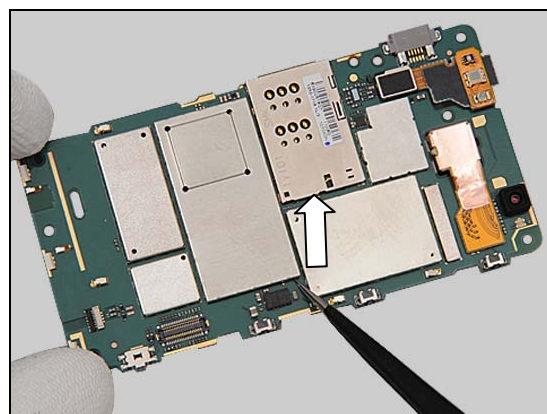
Carry out the Installation as described below.

Follow the 5.1 – 5.5 Reassembly instructions!

REMOVAL

Unsnap the corners of the Shield Can Lid ABB by using a pair of tweezers and pull upwards to remove it.

Scrap! Not to be reused!

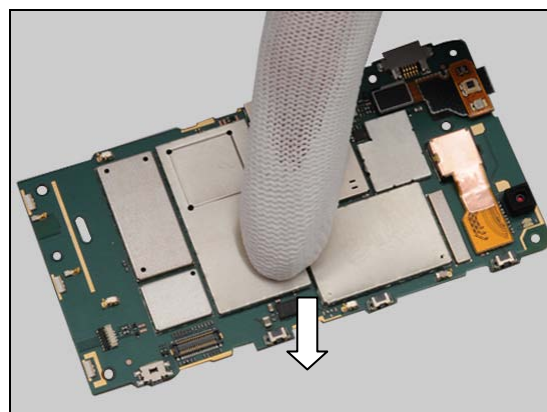
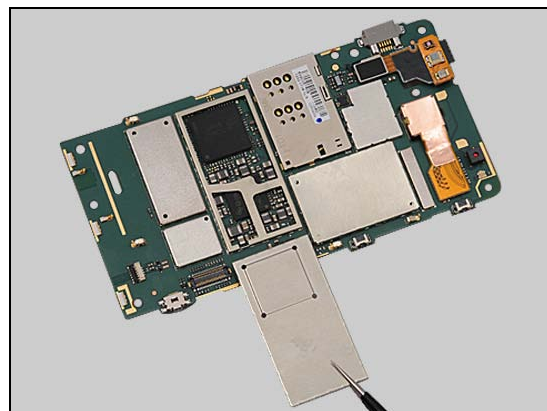


INSTALLATION

Place a new Shield Can Lid ABB in the correct position.

Press to snap it.

Only the edge of the Shield Can is allowed to press.



Replacement

4.17 Shield Can Lid BT GPS

Follow the 3.1 – 3.5 Disassembly instructions!

Carry out the Removal as described below.

Prepare the Shield Can Lid BT GPS.

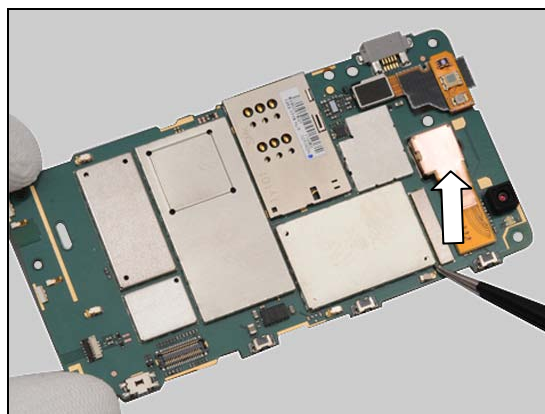
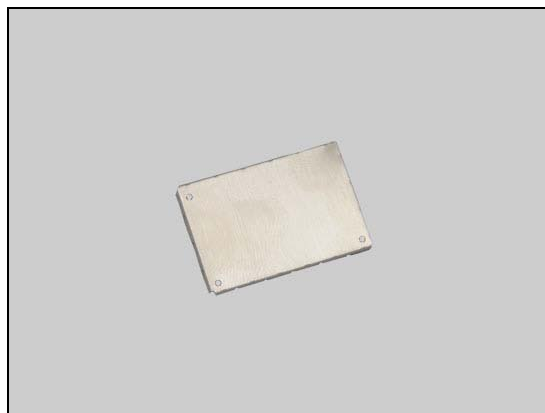
Carry out the Installation as described below.

Follow the 5.1 – 5.5 Reassembly instructions!

REMOVAL

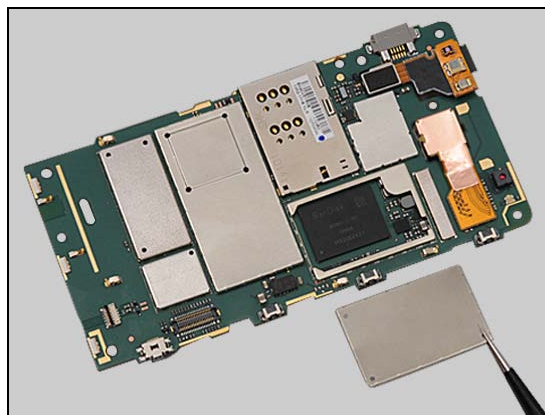
Unsnap the corners of the Shield Can Lid BT GPS by using a pair of tweezers and pull upwards to remove it.

Scrap! Not to be reused!



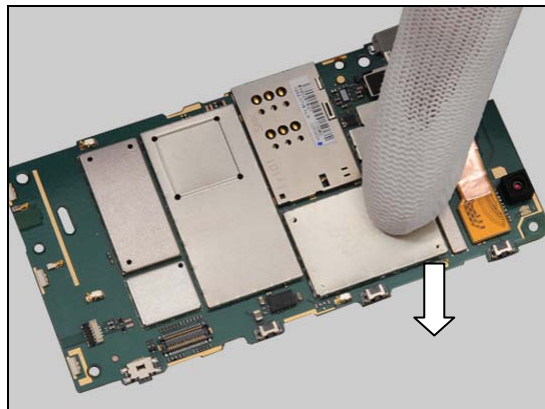
INSTALLATION

Place a new Shield Can Lid BT GPS in the correct position.



Press to snap it.

Only the edge of the Shield Can is allowed to press.



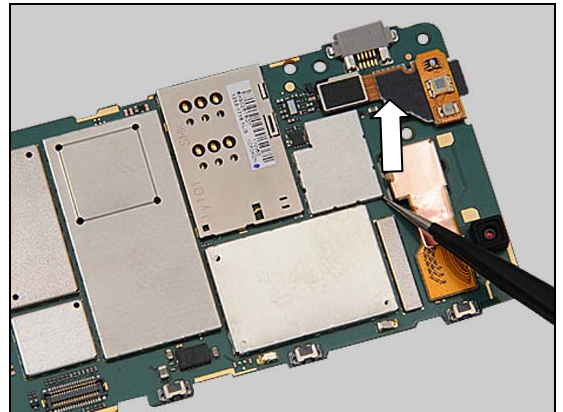
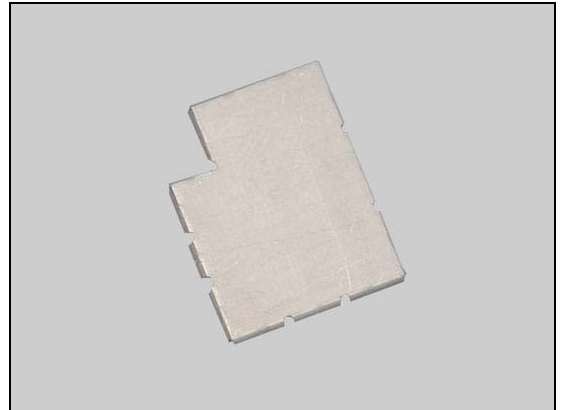
Replacement

4.18 Shield Can Lid DBB

Follow the 3.1 – 3.5 Disassembly instructions!
 Carry out the Removal as described below.
 Prepare the new Shield Can Lid DBB.
 Carry out the Installation as described below.
Follow the 5.1 – 5.5 Reassembly instructions!

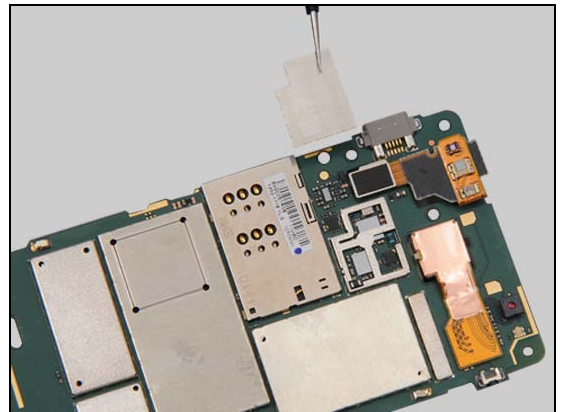
REMOVAL

Lift up to remove the Shield Can Lid DBB.



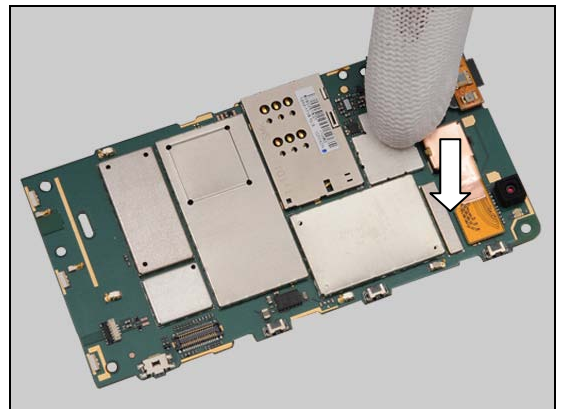
INSTALLATION

Place a new Shield Can Lid DBB in the correct position.



Press to snap it.

Only the edge of the Shield Can is allowed to press.



Replacement

4.19 Sub Camera Rubber

Follow the 3.1 – 3.4 Disassembly instructions!

Carry out the Removal as described below.

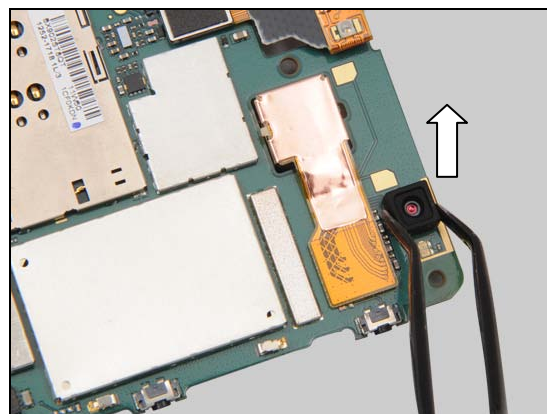
Prepare the new Sub Camera Rubber.

Carry out the Installation as described below.

Follow the 5.2 – 5.5 Reassembly instructions!

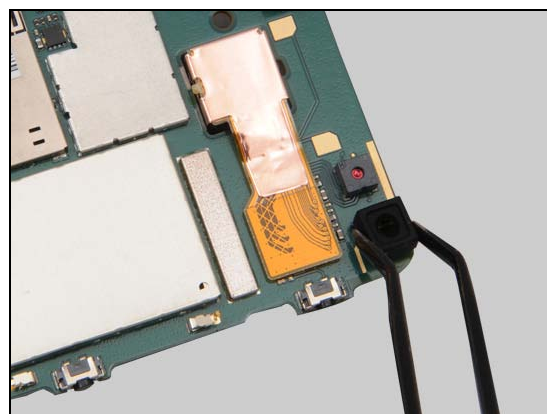
REMOVAL

Lift up the Sub Camera Rubber by using a Flex Film Assembly Tool and remove it.

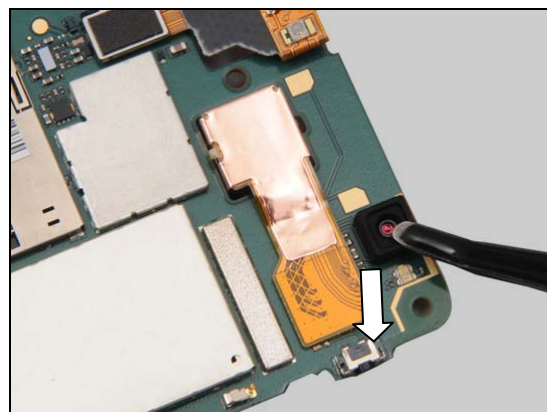


INSTALLATION

Place a new Sub Camera Rubber in the correct position.



Press to secure its position.



Replacement

4.20 Water indicator

Follow the 3.1 – 3.3 Disassembly instructions!

Carry out the Removal as described below.

Prepare the new Water indicator.

Carry out the Installation as described below.

Follow the 5.3 – 5.5 Reassembly instructions!

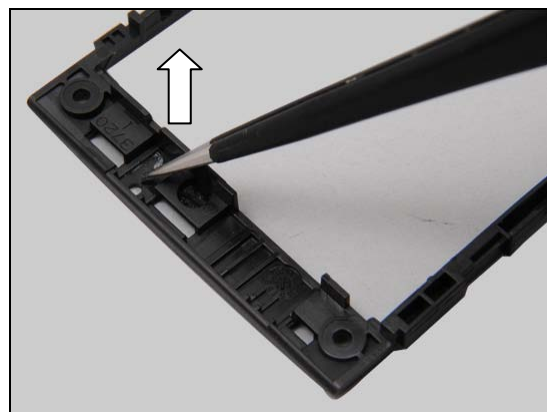
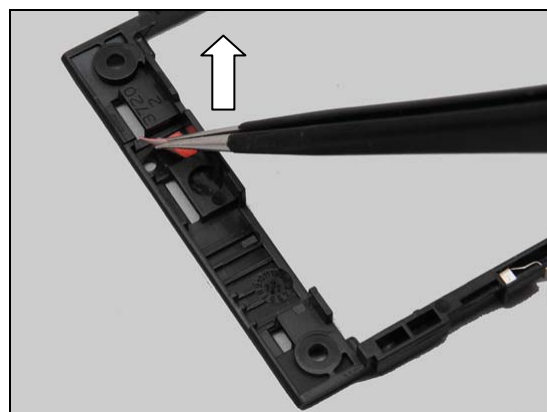
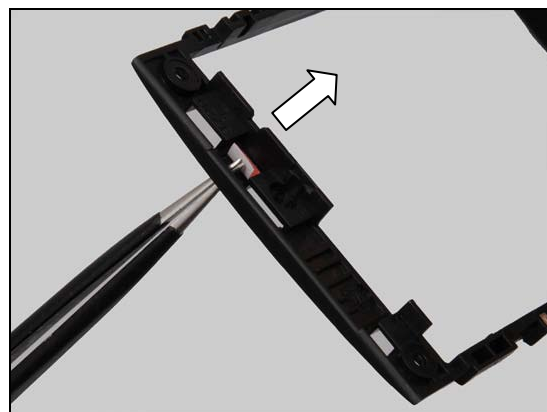
REMOVAL

Push against the Water indicator from the hole by using a pair of tweezers.

Remove the Water indicator.

Scrap! The Water indicator is not to be reused!

Remove the foil on Carrier Frame Assy.



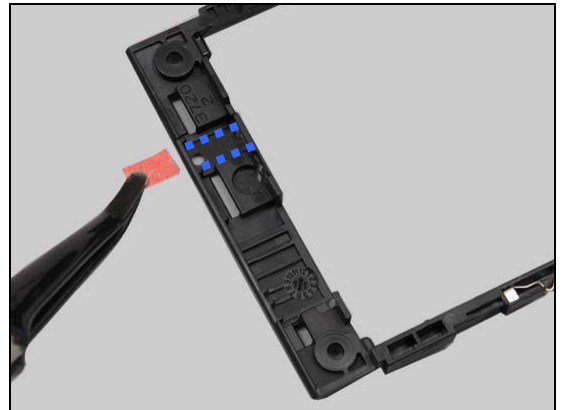
Replacement: Water indicator

INSTALLATION

Place a new Water indicator in the correct position.

Make sure there is no foil on Carrier Frame Assy.

Press to secure its attachment.



Replacement

4.21 Board Swap - Replacement

Follow the 3.1 – 3.5 Disassembly instructions!

Replace the Swap Board.

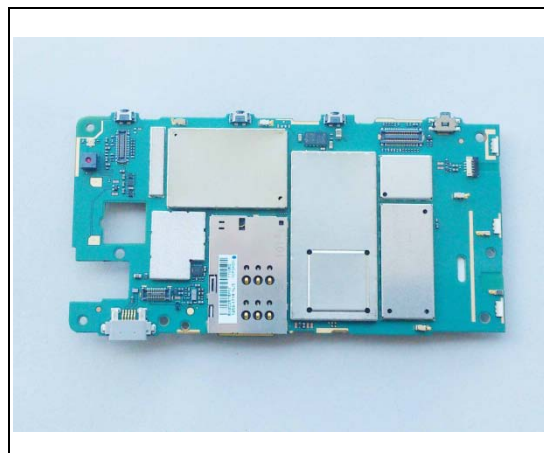
Reuse the Main Camera

Follow the 4.7, 4.14, 4.15, 4.19 Reassembly instructions!

Follow the 5.1 – 5.5 Reassembly instructions!

Touch panel calibration has to be performed for all replaced units; kkk 1257-2706 Trouble Shooting Application – mechanical.

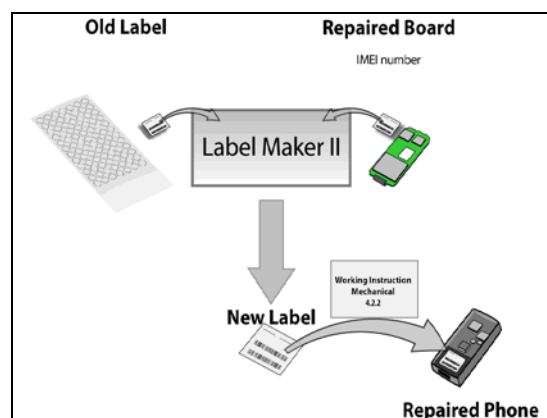
NOTE: Startup the unit to initialize settings, before perform Customize Phone in Emma



4.22 Board Swap – Change Label

CHANGE LABEL

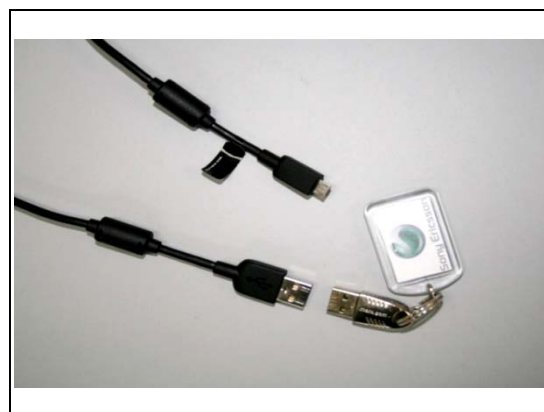
Follow the instructions in the Generic Repair Manual – Build swap for change of label.



4.23 Board Swap – Customize of Software

CUSTOMIZE OF SOFTWARE

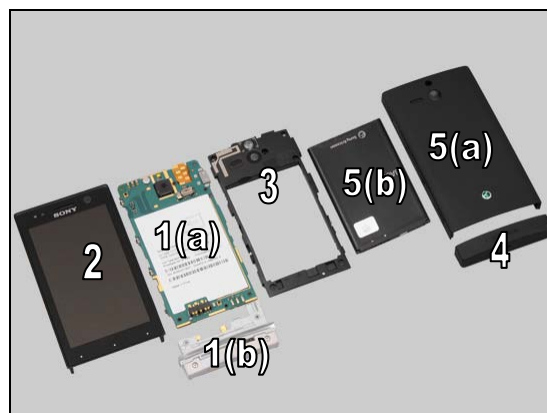
Follow the instructions in the Generic Repair Manual – Build swap for customization of the software.



5 Reassembly

The disassembly is done in the following order:

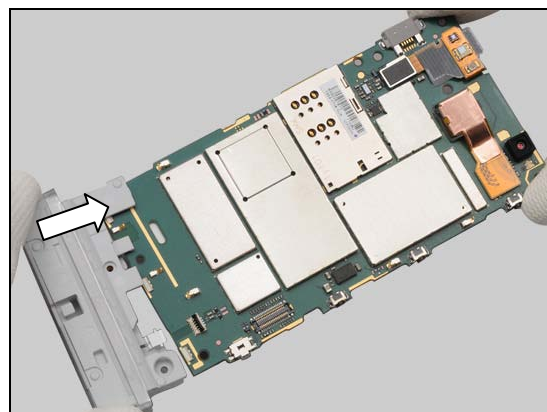
1. Main PBA (a) & Transparent Belt Total Assy (b)
2. Carrier Window Front Assy
3. Carrier Frame Assy
4. Antenna Cap
5. Battery Cover Assy (a) & Battery (b)



5.1 Main PBA & Transparent Belt Total Assy

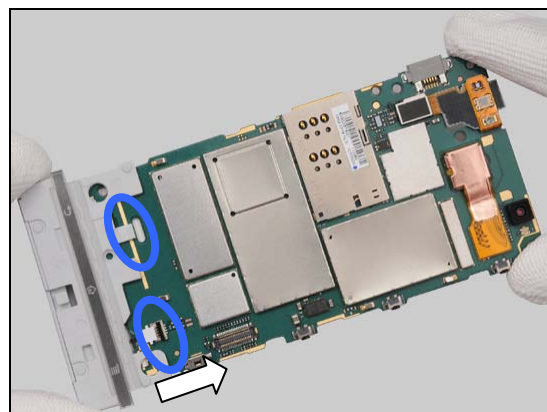
Insert Transparent Belt Total Assy into Main PBA from left side.

Lift its right side a little higher to ensure its hook and ZIF connector FPC above Main PBA .



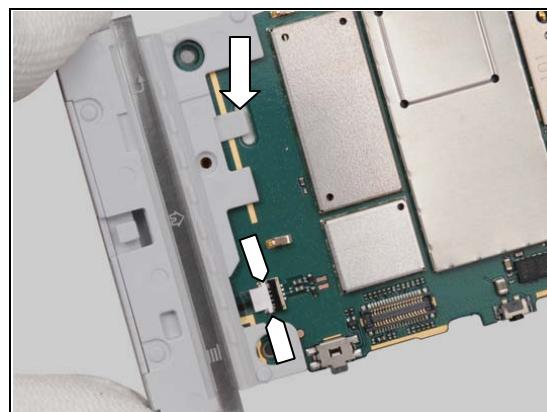
Insert Transparent Belt Total Assy into Main PBA from right side.

Make sure its hook and ZIF connector FPC are well assembled in position.



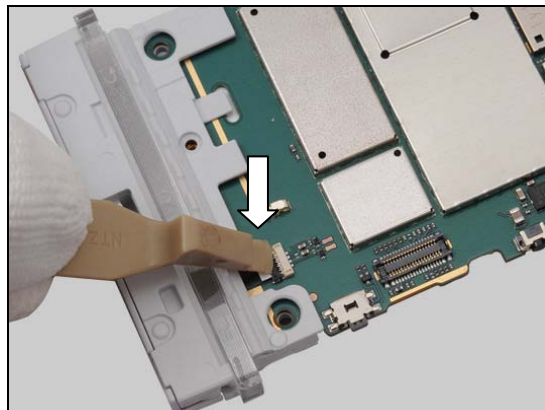
Press the hook to make sure its position.

Check two wings of ZIF connector FPC are in position.



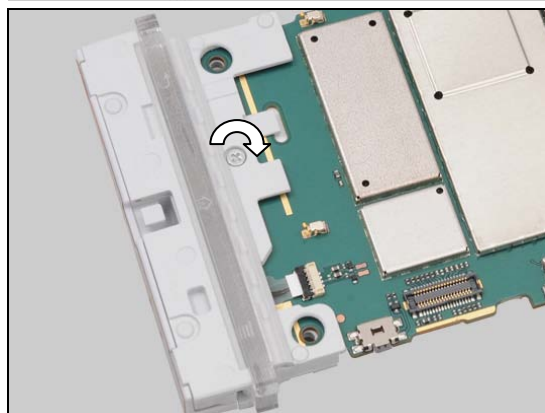
Reassembly

Lock the ZIF connector by using a Front Opening Tool.



Apply 10 ± 1 Ncm torque when tightening the Screw Torx Len:3.1 Diam:1.4 with Bits (JCIS No 0).

Take new screws!

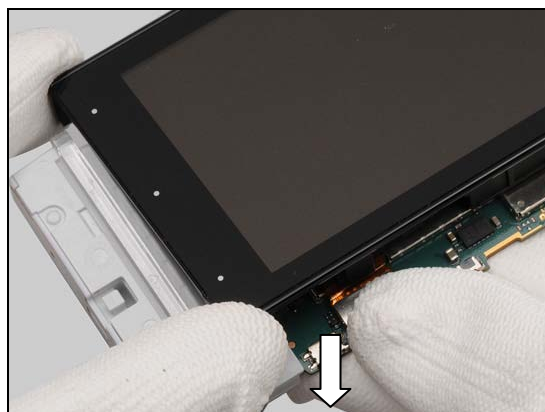


5.2 Carrier Window Front assy

Place the Carrier Window Front assy onto the Main PBA.



Snap the BtB connector with fingers.



Reassembly

Turn over the phone.

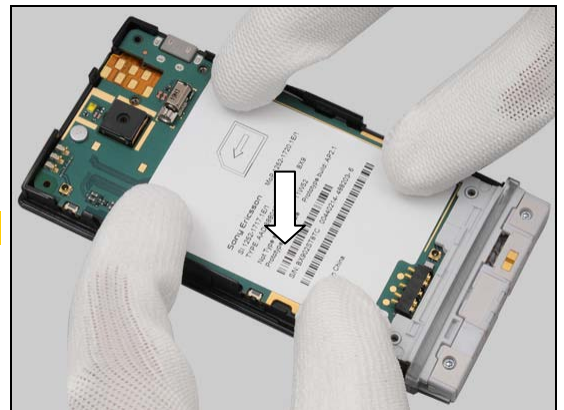


Move the Main PBA into the Carrier Window Front assy.



Press to snap the hooks.

Listen to the click sound.



5.3 Carrier Frame Assy

Place the Carrier Frame Assy onto the Carrier Window Front assy unit.



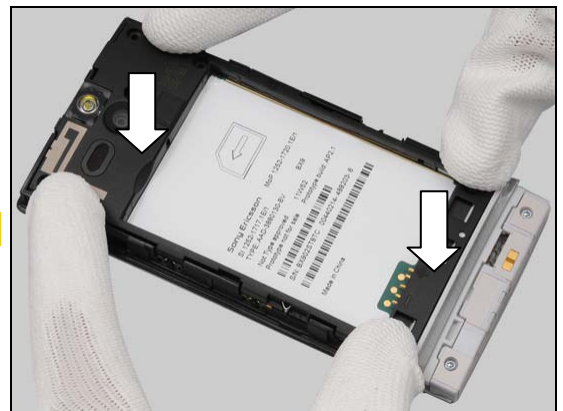
Reassembly

Press the top side to secure the hooks.

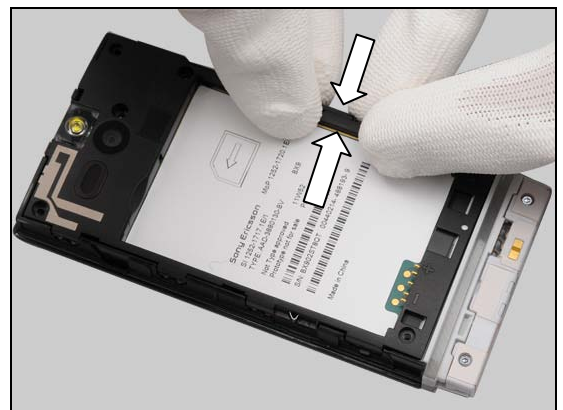


Press to secure the hooks.

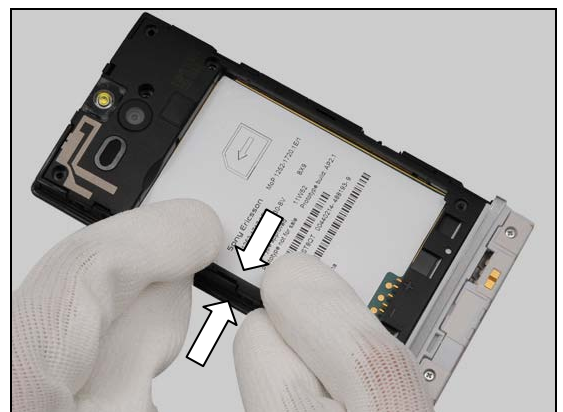
Listen to the click sound.



Press right side to secure the hooks.



Press left side to secure the hooks.



Reassembly

Apply 10 ± 1 Ncm torque when tightening the Screw Torx
Len:5.4 Diam:2.5 with T6.

Take new screws!



Apply 13 ± 1 Ncm torque when tightening the Screw Other
Len:4.0 Diam:1.4 with T5.

Take new screws!



Apply 10 ± 1 Ncm torque when tightening the Screw Torx
Len:3.4 Diam:3.0 with T5.

Take new screws!



5.4 Antenna Cap

Place the Antenna Cap in the correct position.



Reassembly

Push to secure its position.



5.5 Battery Cover Assy & Battery

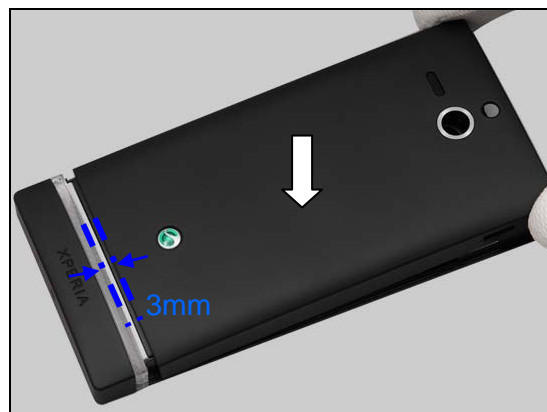
Place the battery into the cavity.



Press the battery to secure its position.



Place the Cover Battery 3mm away from the Transparent Belt Total Assy.



Reassembly

Push downwards to secure its position.



6 Country of Origin Barcodes for Brazil/VIVO Labels

Below is a link to a list of countries of origin. If you are printing a Brazil or VIVO label, scan the barcode corresponding to the correct country of origin for the “Fabricado” field.



7 Revision History

Rev.	Date	Changes / Comments
1	2012-Apr-16	Initial release
2	2012-Apr-18	Update main camera Copper replacement on page 36.
3	2012-Apr-20	Update main camera Copper replacement on page 36.
4	2012-Apr-23	Add Main Camera Film replacement on page 36.
5	2012-Apr-25	Add Board Swap and Barcode Label Chapter
6	2012-Jul-27	Update the chapter 4.21